



USER'S MANUAL

Stereo Speakers

T4

PACKAGE CONTENTS

- 2 x Speakers
- 1 x Micro-USB Charging Cable
- 1 x 3.5mm Audio Cable
- 1 x User's Manual
- 1 x Quick Start Guide

Before using your new product, please read these instructions to prevent any damage.

SAFETY INFORMATION

Please read these instructions fully before installing or operating.

Keep the products and all its parts out of reach of small children.

Do not use the speakers under the water.

Do not disassemble, repair, or modify the speakers.



To avoid possible hearing damage, do not listen to these Bluetooth speakers at high volume levels for long periods of time.

Always keep the volume within reasonable limits.

Use DC 5V charger only.

Do not leave them in low temperatures as moisture can form inside the products, which may damage the circuit boards.

Do not cover or insert anything into the holes in the speakers.

Do not leave them in high temperatures as electronic devices and plastic parts may warp in heat.

Disassembling the speakers voids their warranty.

PRODUCT FEATURES

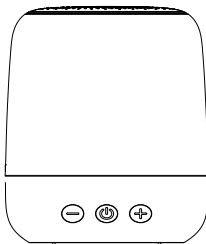
- Wirelessly stream from any Bluetooth devices
- TWS technology allows you to pair the two speakers to enjoy true wireless stereo sound
- 6 LED light modes
- Speakerphone for mobile handsfree
- Plays contents from your TF card
- Rechargeable battery lasts up to 6 hours

Front view



Press and hold:

- Turn on/off
- Reset



Press and release:

- Play/Pause (Bluetooth/TF mode)
- Answer/End a call (Mobile handsfree)
- Mute/Restore sound (AUX in mode)

Press twice:

- Pair/Unpair the supplied two speakers (Bluetooth mode)
- Reject a call (Mobile handsfree)



Press and hold:

- Decrease volume

Press and release:

- Skip to previous track (Bluetooth/TF mode)

Note: Not available in AUX in mode.

Press twice:

- Switch LED light modes / Turn off LED lights

Press and hold:

- Increase volume

Press and release:

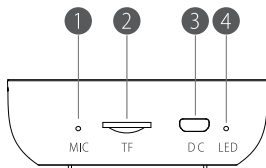
- Skip to next track (Bluetooth/TF mode)

Note: Not available in AUX in mode.

Press twice:

- Disconnect Bluetooth

Back view



1 Built-in microphone
for mobile handsfree

3 DC 5V power supply
socket/Aux in socket

2 TF card slot

4 LED indicator

POSITIONING THE SPEAKERS

It is important that you consider carefully in advance where your Bluetooth Speakers will be situated and make sure that they are:

- on a flat and stable surface.
- at least 1 meter away from other electrical appliances to avoid interference.
- where they will be in range of the connected or 'paired' Bluetooth device (e.g. iPhone/Android phone/computer), which is about 10 meters or less (33 feet or less) in line of sight.

CHARGING YOUR SPEAKERS

Charge your speakers before first-time use.

The speakers beep when the batteries are low.

1. Connect the micro USB ends of the charging cable (supplied) to the USB sockets on the back of both the speakers. Plug the standard end of the USB charging cable into a computer or other USB charging device.
2. The LED indicators on the back of both the speakers will light **Red**, to indicate that the batteries are charging. When the batteries are fully charged the LED indicators will turn **OFF**.


Note: *It will take approximately 3 hours to fully charge your Bluetooth Speakers, before first use.*

3. When fully charged, unplug the micro USB charging cables.

USING YOUR SPEAKERS


Let's get started.

Power on

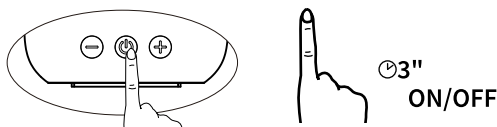
Press and hold the [] buttons on the back of the speakers for 3 seconds to turn them on. Your speakers will power on in Bluetooth mode. A tone will sound and the LED indicators will flash quickly whilst your products search for Bluetooth devices.

Power off

Press and hold the [] buttons for 3 seconds to turn them off.

If the Bluetooth speakers don't receive an audio signal for approximately 15 minutes they will turn off. Press and hold the [] button to turn the products back on again.

If the supplied two speakers are paired by TWS function, turning off either of the speakers will turn off the other.

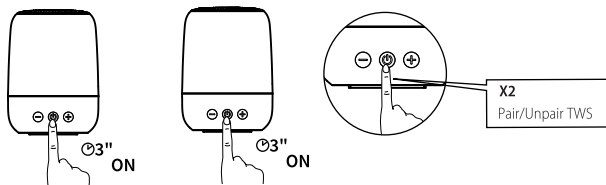


True Wireless Stereo (TWS) Pairing

The supplied two speakers can pair each other by TWS pairing technology for you to enjoy true wireless stereo sound.

1. Turn on the two speakers respectively, and wait for them to automatically enter True Wireless Stereo (TWS) pairing mode, a tone will sound when they are paired.

Note: In True Wireless Stereo mode, you can connect the two speakers and explore the best sound effects with left and right sound channels separated.



2. Connect the host speaker to a Bluetooth device by following the instructions on **Connecting to a Bluetooth device**, to enjoy true wireless stereo sound.
3. Press twice the [X2] button on either of the speakers, to disconnect True Wireless Stereo, if you need to use them with different Bluetooth devices separately. Press twice the [X2] button to enter True Wireless Stereo again.

Note:

- True Wireless Stereo (TWS) mode will be available only in Bluetooth mode.
- True Wireless Stereo (TWS) mode requires both speakers to be powered on.
- In case both speakers are paired to Bluetooth devices separately, please unpair at least one before entering True Wireless Stereo (TWS) mode.

Connect to a Bluetooth device

1. The LED indicator on the back of the host speaker will flash quickly whilst it searches for Bluetooth devices.
2. On the device that you would like to connect to your Bluetooth speaker via Bluetooth (e.g. iPhone/iPad/Android/other phone/Tablet/Computer), turn on Bluetooth connectivity and ensure that it is 'discoverable'.
3. Select to 'Add new device', if necessary.

Note: Some products will automatically search for a new device and so the 'Add new device' option is not available.

4. When found, your Bluetooth speaker will be displayed as 'Megatek T4'. Select the device name to begin pairing.

Note: If your device requests a password, please enter '0000' to complete the device pairing.

5. When pairing is completed the blue LED indicator on the back of the speaker will change to flash slowly.
6. Now that you have paired your device with the Bluetooth speaker, it will connect to it when it is within range, which is about 10 meters or less (33 feet or less), line of sight.
7. Your device will remain paired with the Bluetooth speaker unless you decide to disconnect or 'unpair' it.

Adjusting the volume

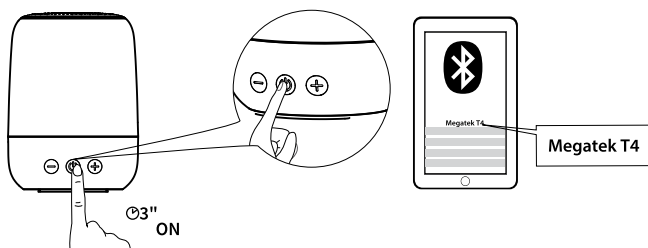
- Press and hold the [-] button to decrease the volume.
- Press and hold the [+] button to increase the volume.

Note: You will hear an audible alert when the minimum or maximum volume level has been reached.

Listening to Music/Audio using Bluetooth

In Bluetooth mode:

1. Select and start the music or audio that you wish to listen to on your paired Bluetooth device, it will now be heard through the Bluetooth speakers. Adjust the volume on the connected device and/or your Bluetooth speaker.
2. You can use the controls on your paired Bluetooth device as well as those on your Bluetooth speakers.
 - Press and release [⏻] button to play/pause.
 - Press and release [-] / [+] button to skip to previous/next music/audio track.





Using as a Mobile handsfree speakerphone

If your mobile phone supports the Hands Free Profile (HFP) or Headset Profile (HSP) you can pair it with your Bluetooth speaker and use it as a handsfree speaker when it is in Bluetooth mode.

Note: *If your mobile supports both the HFP and HSP profiles, set it to HFP.*

Receive an incoming call:

1. Press the [] button on your Bluetooth speaker or answer the call as usual on your mobile phone. You will be able to hear your caller through your Bluetooth speaker and your caller will also be able to hear you.
2. Press the [] button on your Bluetooth speaker to end the call, or end the call as usual on your mobile phone.

Note:

- *If you were listening to music when you receive or make a call, the music will be paused whilst the call is in progress and will resume once the call ends.*
 - *This product does not support making an outgoing call.*
-

Aux in mode


1. Connect the 3.5mm end of the audio cable (supplied) to the headphone (or auxiliary out) socket of your secondary device. Connect the other two Micro-USB ends to the Aux in sockets on the back of both your Bluetooth speakers. This will switch your bluetooth speaker to Aux in mode.
2. Press the Play button on your external device to start playback through the Bluetooth speakers.
3. To gain optimal volume levels, adjust the volume level on both the secondary device and on the Bluetooth speakers.

Note: *After you have finished listening to your external device you must unplug the audio cable from the Aux in sockets, to be able to use them as Bluetooth speakers again.*

TF (Micro-SD) card mode

1. Insert a TF (Micro-SD) card into the card slot on the back of either of your Bluetooth speakers, with its label side facing up. This will switch the inserted speaker to TF card mode.

Note: *TF (Micro-SD) cards can only be inserted in one direction. If the card does not easily slide and “clip” into place, remove, turn it around, and re-insert into the slot.*

2. You can use the controls on your Bluetooth speaker.
 - Press [] button to play/pause.
 - Press [-] / [+] button to skip to previous/next music/audio track.
3. To gain optimal volume levels, adjust the volume level on the Bluetooth speaker.

Note:

- *After you have finished listening to TF (Micro-SD) card you must remove it from the card slot to be able to use it as Bluetooth speaker again.*
 - *You can remove the card by pushing it further into the slot and releasing.*
-

TECHNICAL SPECIFICATION

Audio output:	2 x 5W RMS
Micro USB socket:	Input DC 5V 1A
Lithium battery:	2 x 1000 mAh
Bluetooth:	Version 5.0
Pairing name:	Megatek T4
Profiles:	A2DP, HFP, AVRCP, GAVDP
Frequency range:	2.400GHz-2.480GHz
Operation range:	33 ft (10 m)

TROUBLESHOOTING

Unable to pair the 2 speakers via TWS:

- Check that both speakers are in Bluetooth mode.
- Check that at least one of the speakers is not connected to Bluetooth device.

Unable to pair with a Bluetooth device:

- Check that you are in Bluetooth mode.
- Ensure that you are within range of the Bluetooth speaker for Bluetooth functionality, 10 meters or less (33 feet or less).
- Move the Bluetooth speaker and Bluetooth device away from other Bluetooth devices/electrical equipment.
- If possible, turn off other nearby Bluetooth devices or disable their Bluetooth functionality.

No sound / Sound distortion:

- Adjust the volume.
- If you are using a Bluetooth connected device, check the volume on the secondary device and on your Bluetooth speaker.
- Your Bluetooth speaker may need to be recharged.

Unable to play TF (Micro-SD) card:

- Check that card is formatted in FAT32, not NTFS.
- Check that your card capacity does not exceed 32 GB.
- Check that your audio files are in MP3/WAV formats.

How to reset the speakers:

- Press and hold[] button for 10 seconds till it restarts.

FCC STATEMENT

This equipment has been tested and found to comply with the limits for a Class B digital device, pursuant to part 15 of the FCC Rules. These limits are designed to provide reasonable protection against harmful interference in a residential installation. This equipment generates, uses and can radiate radio frequency energy and, if not installed and used in accordance with the instructions, may cause harmful interference to radio communications. However, there is no guarantee that interference will not occur in a particular installation. If this equipment does cause harmful interference to radio or television reception which can be determined by turning the equipment off and on, the user is encouraged to try to correct the interference by one or more of the following measures:

- * Reorient or relocate the receiving antenna.
- * Increase the separation between the equipment and receiver.
- * Connect the equipment into an outlet on a circuit different from that to which the receiver is connected.
- * Consult the seller or an experienced radio/TV technician for help.

Caution: Any changes or modifications to this device not explicitly approved by manufacturer could void your authority to operate this equipment.

This device complies with part 15 of the FCC Rules.

Operation is subject to the following two conditions: (1) This device may not cause harmful interference, and (2) this device must accept any interference received, including interference that may cause undesired operation.

RF Exposure Information

The device has been evaluated to meet general RF exposure requirement. The device can be used in portable exposure condition without restriction.

12 MONTH WARRANTY

Dear valued Customer, **Thank you for choosing MEGATEK !**

1. If you are not satisfied with our product and need to return, please kindly process it through Amazon system or write to us for assistance, if needed. You can return items within 30 days of receipt of shipment. If the product seems defective, please CONTACT US and we will try our best to provide satisfying service.
-

2. Warranty time: You get 12 months!

Having problems with this product? You have 3 choices:

- 1) Contact us through the Amazon Buyer-Seller Messages and we will provide support within 24 hours.
- 2) You can also email us directly with your order ID and description of problems at: service@megatekelec.com
- 3) Just call us at: +86 579-8275-5605
(Our working time: Mon.to Fri. GMT +8:00 China, except weekends and national holidays).

Attention: natural disasters, incorrect use, unauthorized repairs damages are not in warranty.

3. In MEGATEK, we strive to bring more satisfactory products to our valued customers and make them have a great experience, not only for pre-sale but also for after-sale service, as we have a whole team of customer service stand behind our products. Our extensive customer service team will solve your product issues with satisfied solutions, answer any questions, and effectively process return & replacement.
-

If you are satisfied with our products and service, please rate us with 5 stars review and feedback! Your support means a lot to us and will help us bring more good products in return to you.

Get support at:

<http://www.megatekelec.com>

MEGATEK[®]

After-sale Contact information:

E-mail: service@megatekelec.com

Phone: +86 579 8275-5605

Website: www.megatekelec.com